



KAISER PERMANENTE®

Kaiser Permanente Community Behavioral Health Initiative

Overview

In October 2023, Kaiser Permanente and the California Department of Managed Health Care (DMHC) entered into a Settlement Agreement to improve patient access to mental health care. Under this agreement, Kaiser Permanente also committed to investing \$150 million over five years to help develop, build, and expand evidence-based treatment and care for behavioral health conditions for all Californians. The Kaiser Permanente \$150 million investment plan was approved by the DMHC in June 2026.

Vision

Guiding Principles

- ❖ Transformative
- ❖ Innovative
- ❖ Impactful
- ❖ Sustainable
- ❖ Equitable

Vision Statement

Increase access, quality, and prevention to improve and sustain behavioral health outcomes and reduce disparities for vulnerable populations in California.

Key Results and Outcomes

Key Results:

Increase the percentage of Californians who can access high-quality behavioral health care when and where they need it.

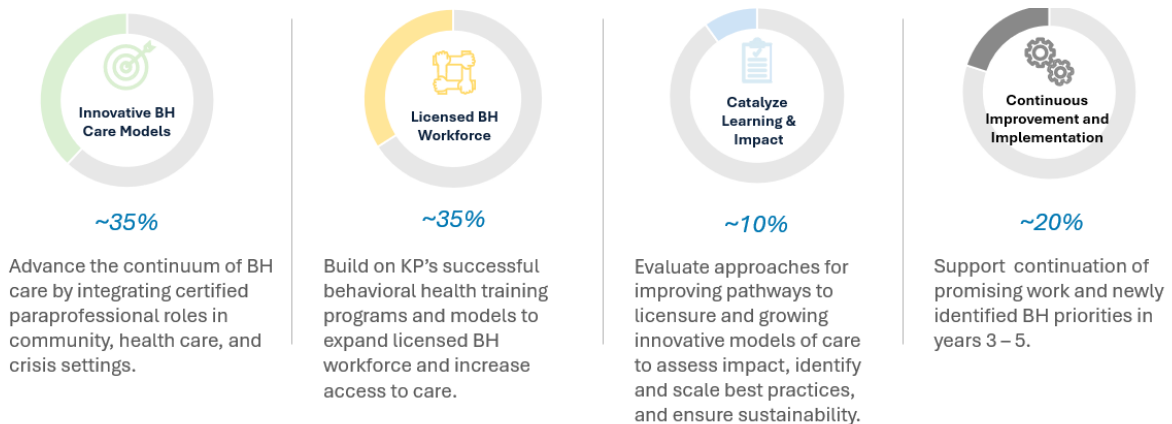
Key Outcomes:

- **Support pathways to licensure for behavioral health professionals** in targeted settings and locations through training and clinical supervision.
- **Increase paraprofessional provider availability in community and care delivery settings** to increase access and navigation of services.
- Create and disseminate **models for integration of paraprofessional roles** in community, primary, specialty, and crisis care delivery settings.
- **Reduce behavioral health disparities** among at-risk populations.

Investment Plan

Kaiser Permanente’s initial focus will be to develop innovative care models that employ certified paraprofessionals in community and care delivery settings across the state to expand access to mental health care for California’s vulnerable populations, including youth and older adults. Additionally, Kaiser Permanente will advance programs that address the challenges of licensure, such as inadequate clinical training and supervision, to grow the number of licensed clinicians in California, particularly in communities where access to mental health care is limited. These programs will also help build a workforce that reflects community needs, including greater language capacity.

Approach



Percentages reflect the initial approved plan and will be evaluated as the projects evolve.

Evaluation and Dissemination of Best Practices

Kaiser Permanente will evaluate these investments to measure their impact and ensure the long-term sustainability of improvements in California’s mental health care. To maximize the value of these investments, Kaiser Permanente will share best practices, recommendations and lessons learned in public forums with key state, community, and industry stakeholders.